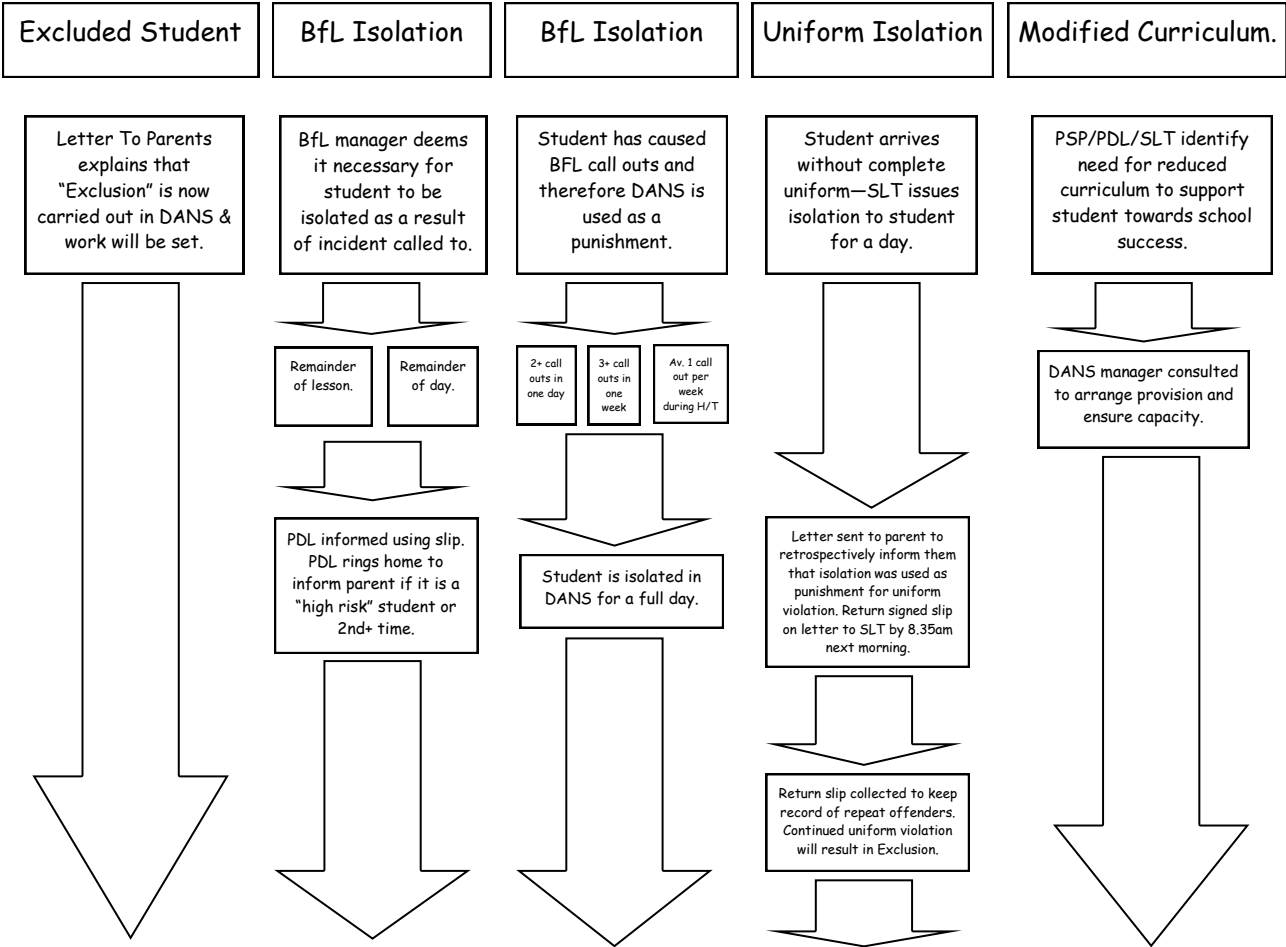


DANS—the procedures.



All students spending time in DANS will be required to complete a "Behaviour Questionnaire". This should allow students some time to reflect on what actions caused them to be required to spend time in DANS.

- Register will be kept in DANS of who has been on isolation.
- Students will sign in/out of DANS throughout the day.
- Frequency of attendance in DANS will be monitored by DANS manager and recommendations will be made to SLT/PDLs accordingly.
- Students will have different Break/Lunch times to the rest of the school.
- Food will be delivered to DANS from the kitchen—orders for lunch to Pauline by 11am (break).