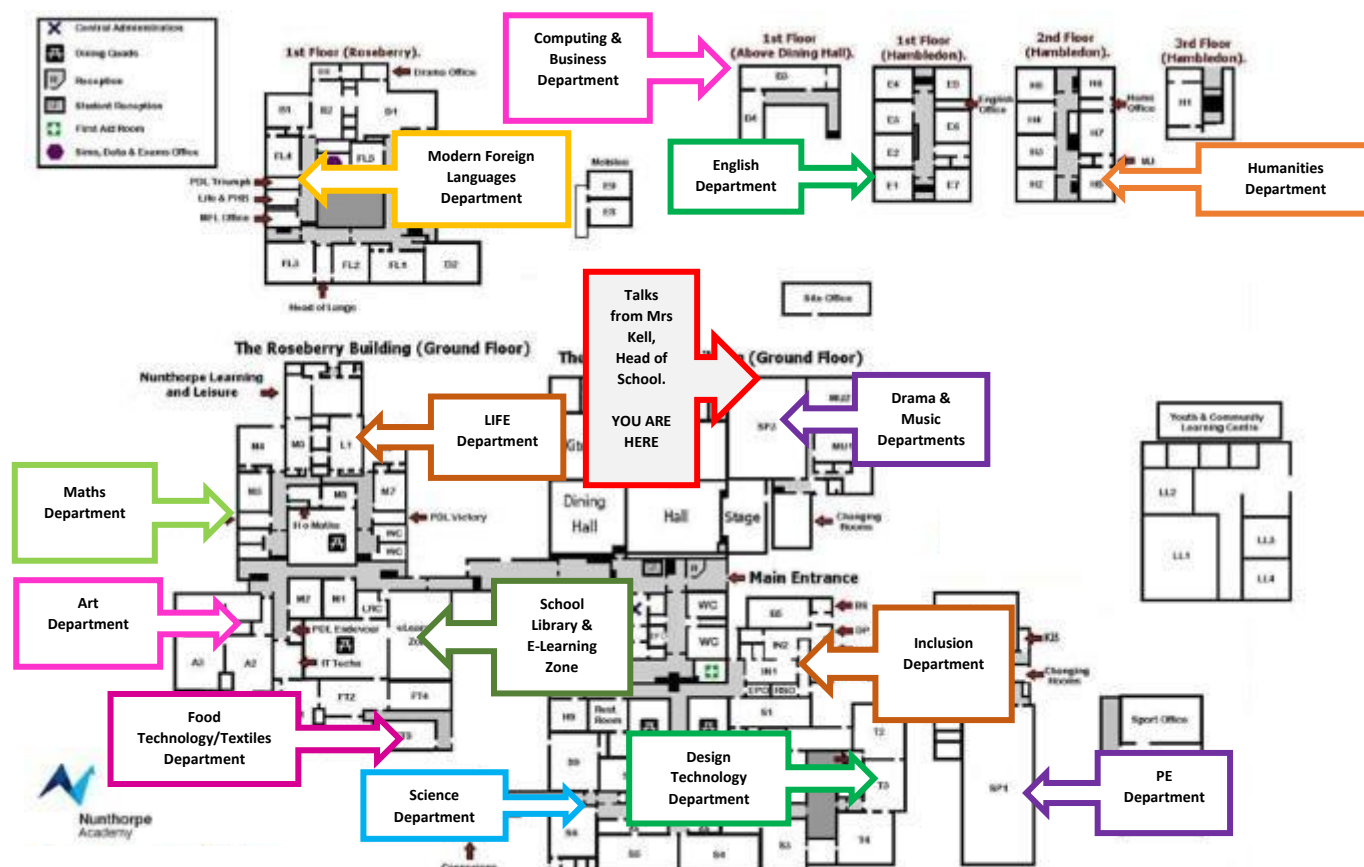




Welcome to Nunthorpe, Year 6 Opening Evening

Monday 16 September 2024, 4:00pm – 7:00pm

Please explore our academy at your own pace. Each department has been highlighted on the map below. Mrs Kell, Head of School, will be giving two talks on the evening at 4.30pm and 5.30pm in the Main School Hall.



Our Ethos:

The simple message of **READY, RESPECTFUL, SAFE** is promoted at every opportunity and used throughout all aspects of life within the academy.

Our aim is to ensure everyone is **READY** to be successful. Being prepared is an essential part of this journey and students will understand how following clear routines and being prepared for learning prepares them for their experiences in the wider world and employment.

Our aim is to ensure everyone understands how to be **RESPECTFUL** and to help change behaviours, which are not. Nunthorpe Academy is an inclusive 11-19 academy, which is proud of every unique individual and encourages all students to celebrate and embrace difference.

And above all our aim is to keep everyone **SAFE** and prepare them for **LIFE** in the outside world. A key aim to ensure this is the culture of our academy is for everyone to remember to be kind.

Support Systems:

Supporting every student during the five years with us is at the heart of what the Pastoral Team stands for. Clearly, the level and type of support, which is appropriate, varies according to each individual, but some of the people who may be involved in supporting your child are as follows:

Transition Lead:

At Nunthorpe we have a dedicated member of staff to oversee the transition from primary to secondary school. They will meet students and families before the start of the academic year and organise activities during transition week(s). They collate information from primary school and create tutor groups. A Year 7 settling in evening is available for parents/carers to come into the academy and meet the Year 7 pastoral team, tutors, and the Year 7 Progress Leader.

Senior Pastoral Managers (SPMs) & Assistant Pastoral Managers (APMs)

There are five SPM's and five APM's, one of each for Year 7-11. They are responsible for the welfare of every child in their year group, both academically and socially. They are the leaders and visionaries for each year group and work closely together to develop the whole academy ethos and vision for the pastoral system. In addition to line managing the team of tutors and support tutors and planning the weekly activities and assemblies, SPM's are involved in monitoring the behaviour and attendance of all their students. This may include putting students on report, doing some one-to-one mentoring with them (or referring them to someone else to mentor), initiating PSP procedures (Pastoral Support Programme) or liaising with other agencies involved with that child, such as social services, CAMHS or medical staff.

The Senior Pastoral Managers are supported by Assistant Pastoral Managers. The APM's role is to support the students in their wellbeing, development, and social development, as well as ensuring that the Academy's high standards of behaviour, attendance and organisation are met. They are also responsible for attendance of some groups of students within their year group, both praising and rewarding students with good attendance, as well as following up on any absences to make sure that every child in their year group is given the very best chance to succeed at Nunthorpe Academy and beyond.

Form Tutors:

The form tutor is at the very centre of every student's academy life and should always be the first port of call for any concerns or queries, acting as their 'champion.' As well as running the daily activities and encouraging students to develop their skill set, they are also crucial in the academic monitoring process, analysing data to spot trends and patterns and helping students (and where necessary parents) to take appropriate action. Form tutors provide a strong link with parents and will often contact home to see how things are going or to discuss a specific incident. In effect, the form tutors act *in loco parentis* during the academy day, and they should always be kept informed of any developments in a child's life which may be affecting their progress or behaviour in the academy.

Attendance Officer (AO):

The Attendance Officer monitors attendance across the academy (11-19) and works closely with the Pastoral teams, families, students, and the Local Authority to ensure all students are attending the academy and receiving the best opportunities possible for them. Any absence from the academy requires parents/carers to report non-attendance daily.

Inclusion Officer:

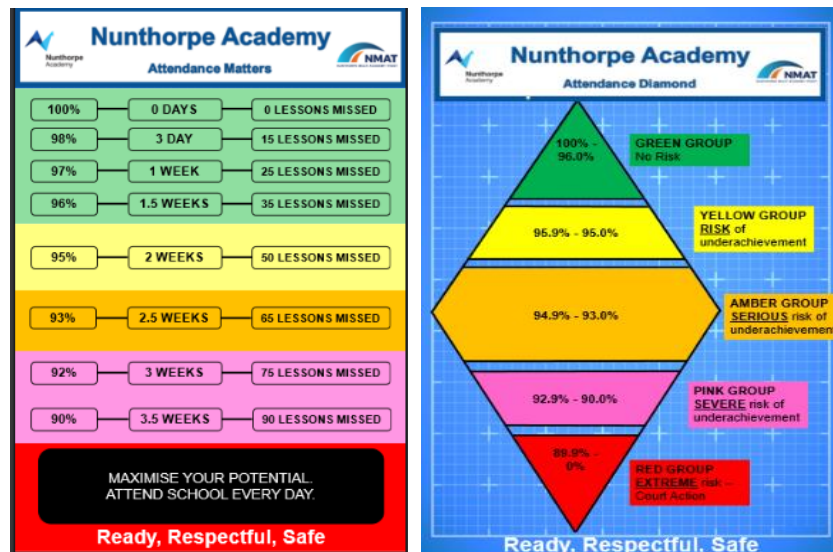
Our Inclusion Officer role is to conduct and record investigations into any incidents, which happen in the academy, which are deemed to be serious for whatever reason. They interview all the students and staff concerned, including any witnesses, and recommend appropriate action based on the advice of the Senior Leadership Team. Students can refer issues to the Inclusion Officer directly, for example if they are concerned about being bullied, or the pastoral team may refer incidents.

Rewards and Sanctions:

Our behaviour policy, inclusive of rewards and sanctions, is key to ensuring that students can access an education which prepares them for life beyond the academy. Our behaviour and reward monitoring platform, Class Charts, ensures that both students and parents/carers can take responsibility for their achievements and sanctions; ‘cashing in’ positive achievement points for rewards such as stationary or vouchers as well as understanding why a specific negative behaviour point or sanction has been awarded.

Each member of teaching and pastoral staff at the academy will apply the behaviour policy consistently and fairly. Whether students are in lessons or taking part in social time activities, there is an expectation that students will adhere to the academic standards established by senior leaders, SPM’s and APM’s. Positive ‘achievement’ points are limitless and can be awarded for a student’s effort in a lesson or task, attendance to the academy or other positive aspect of academic or pastoral life. Behaviour points are the opposite to this, limited to up to four per lesson when in attendance at the academy. Despite this, and depending on the severity of the misdemeanour, students may receive up to three opportunities to modify their behaviour; beginning with a ‘Verbal Warning’ and concluding, in some cases, with the removal of a pupil to Isolated Learning.

Attendance Matters:



Attendance of all our students is a top priority and forms an integral part of our development plan for the whole of the academy. The importance of attending lessons and being punctual within the different aspects of academic life ensures that students are prepared for the real world beyond the walls of the classroom, allowing them to access their full potential. Incentives for positive attendance figures is systematically built into our pastoral programme as we reward students with trips and other ‘reward visits’ at the end of each academic year.

Key Stage 3 Curriculum:

Students study the following subjects at KS3 (Year 7 to Year 9). Students will study one modern foreign language (either French or German) throughout Key Stage 3. Students will study a programme of learning covering PSHE in the subject of Life and their tutorial time.

Art	French	Mathematics
Computing	Food Technology	Music
Drama	German	Philosophy and Ethics
Design Technology	History	Physical Education
English	Life	Science

Key Stage 4 Curriculum:

At KS4 (Year 10 and 11) all students study the core subjects of English, Maths and Science, alongside core PE. Students then choose to study courses in four additional subjects for 2.5 hours each per week. Pathways are often given to students before choosing options in Year 9, allowing for students to have a fully considered approach to which subjects would best work for them, their interests and future careers; in whatever field that may be.

Art and Design	English Literature	Mathematics
Business Studies	Engineering	Music
Child Development	French	Philosophy and Ethics
Combined Science	Geography	Physical Education GCSE
Design Technology	German	Separate Science
Drama	Health and Social Care BTEC	Spanish
English Language	History	Sport VCERT

Key Stage 5 Curriculum:

Nunthorpe Sixth Form is a thriving, 'outstanding' provision with plenty of opportunities on offer.

Art and Design	Further Mathematics	Music
Biology	Geography	Philosophy and Ethics
Business Studies	German	Physical Education
Chemistry	Government and Politics	Physics
Drama and Theatre studies	History	Product Design
English Language	Law	Psychology
English Literature	Mathematics	Spanish
French	Media Studies	Extended Project

Extra-Curricular Provision:

The broad and balanced curriculum at the heart of the academy is only matched by the range of opportunities we offer our students across their time at Nunthorpe. Whether your child be a gifted mathematician or a natural performer when on the stage, our staff are tireless in their approach both in and out of the classroom. There are plenty of clubs and groups which allow students to actively engage in different aspects of academy life, affecting change in the process. Examples of such offers include our annual academy musical, concert recitals and a thriving range of sporting clubs.