

5 September 2025

Dear Parent(s) and Carer(s)

Thank you for your support in ensuring that your child has returned to Nunthorpe Academy safely, on time, incredibly smart in immaculate uniform, well equipped, enthusiastic, engaged, prepared for learning, ready to listen and to start a whole new chapter of learning and 'Thriving Together' to be the 'best versions of themselves they can be'.

It has been an absolute pleasure to welcome our students back from the summer break with their polite 'hello' and 'good mornings' as they come through the gate and standards check, organised and ready to show their equipment and precise uniform. Very few students have needed to access the standards hub but where this has happened students have engaged positively and loaned equipment or uniform where it has been required to ensure high standards are met across the board.

Welcome assemblies delivered by the SLT link and Pastoral team have been positively received and served as a purposeful and timely reminder of the launch presented before the summer to students, staff, parents and carers. Our aim is for all students to feel like they belong and for stronger relationships to develop, through clear, positive and timely communication. Please ensure that you have downloaded the Class Charts app and followed us on Facebook and Instagram to be fully informed with all of the latest updates.

Our focus on high standards and achievement is paying off, with 8192 positive points awarded by the end of yesterday compared to just 359 negative points! This is a ratio of 1:22; we are smashing the 1:5 ratio promoted with students and staff. This week there has been a very clear focus on ensuring students understand the new behaviour expectations, Five to Thrive teaching and learning expectations, seating plans, classroom and book set up, introduction to the subject and overarching subject expectations. I have been delighted that as the Senior Team has walked the academy, we have seen that this is having a very positive impact. Well done!

Attendance

Attendance for the first three school days is 94% against a target of 96%, and although a positive start, we can still do better! Research states that if a child does not attend on the first day and week of an academic year this may lead to further attendance concerns. Please encourage your child to attend every day, it is proven that attendance improves a sense of belonging, better mental health and achievement. Nunthorpe students last year with attendance above 90% achieved on average 10 GCSEs at grade 5 and above, this was significantly impacted for students with attendance below this point, which is classed as persistent absence. Please contact your child's tutor or pastoral team if you require support in encouraging improved attendance by your child.

Students were consulted at the end of last year about rewards and celebration events to ensure valued recognition of student's achievements, particularly those who 'get it right, all day, every day', the first of these events has been held today at our celebration breakfast. All students who were nominated for numerous #hotchoc with the Head last year were invited to set precedent for the year ahead with 36 attending.

Please refer to our Nunthorpe Academy website for further information regarding policies and changes if you were unable attend our launch events prior to the summer break.

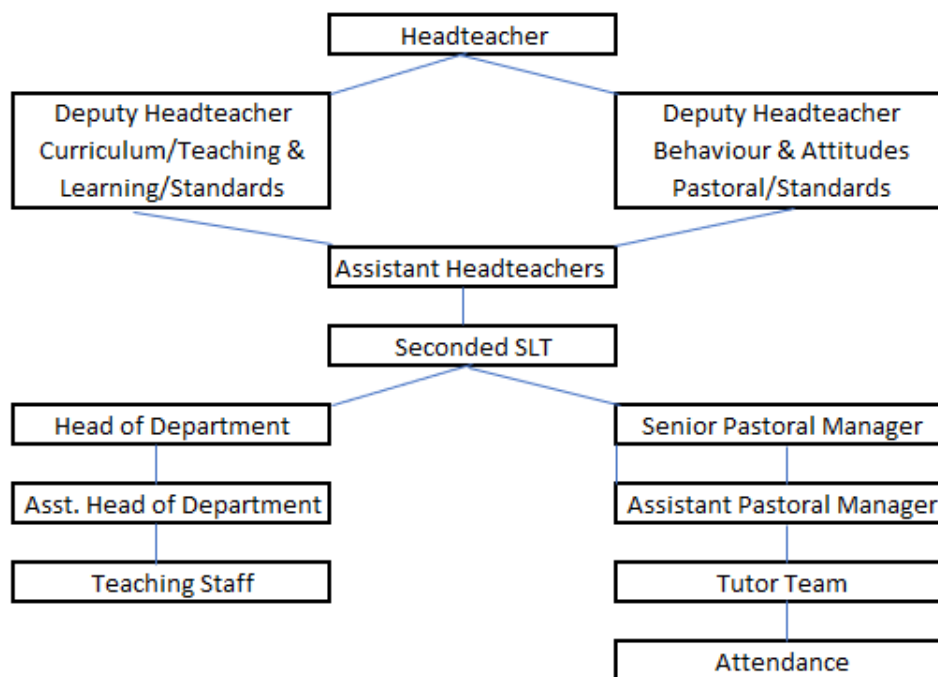
SEND and Inclusion

Within our Inclusion department there have been a number of changes this September. We have said goodbye and thank you to Mrs Brosnan, Assistant Vice Principal Inclusion, SENDCo and Designated Safeguarding Lead as she leaves us after four years to spend time with her young son.



We are delighted that Mrs Lawson, Inclusion Lead for Arete Learning Trust, an experienced SEND expert and Senior Leader, is supporting the academy and will lead SEND in the interim, working closely myself and Mrs Chapman-Jones. A central SEND email has been created SEND@nunthorpe-alt.uk to coordinate central communication. Please use the flow diagram below to direct your communications, queries or questions to the relevant person; in line with our policy, we will respond within two working days.

Pyramid of support and escalation



We are currently going through a rigorous external recruitment process, and will be in touch with more information in due course.

Parent/School Partnership

At Nunthorpe Academy we recognise the importance of and value parent/carers involvement and engagement in the life and development of the Academy. We believe that education is a collaborative enterprise involving, amongst others, parents/carers, staff and children. As an Academy we are therefore committed to establishing and maintaining an effective and purposeful working relationship between the Academy and home which results in all partnerships 'Thriving Together' to allow each individual to be the 'best versions of themselves they can be'. Throughout the school year there will be lots of opportunities for you to come to school and meet with us and support your child's learning, starting with our Year 11 X Evening, please look out for communications- we look forward to seeing you there.

We look forward to working closely with all members of our local community in the coming year and thank you for your continued support.

Yours sincerely

Kate Kell
Headteacher

KK/JSO